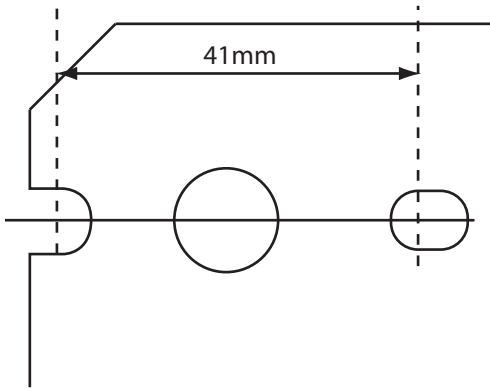


# FIXING INSTRUCTIONS FOR A & B SERIES



## Preparation

Fit a suitable lock or latch with an 8mm follower.  
If you intend to bolt fix the lever furniture ensure the lock or latch has bolt holes at 38-41mm centers.  
Drill the door with two bolt holes at 41mm centers.

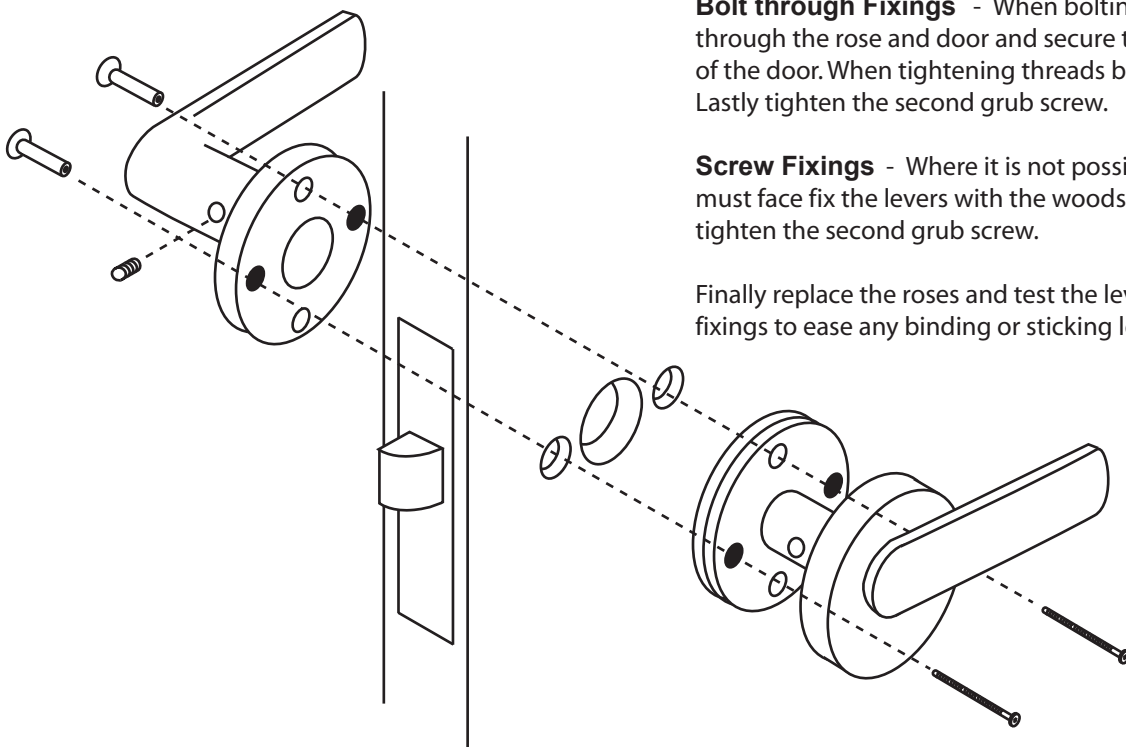
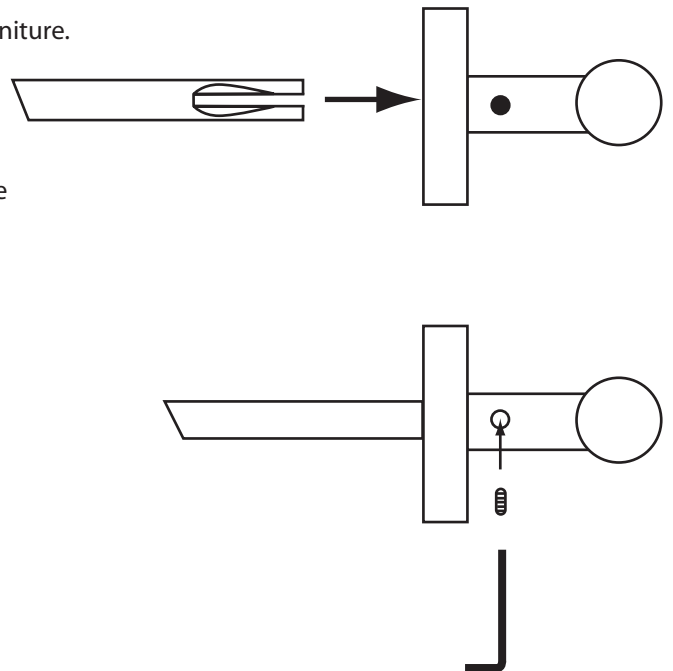
## Fitting

Carefully remove the outer rose covers on the lever furniture.

The spindle provided with the lever furniture is slotted at both ends.

Insert the spindle in one lever, ensuring the slot in the spindle is suitably aligned with the grub screw hole in the stem of the lever. Once aligned tighten the grub screw with the allen key provided.

Push the spindle through the lock/latch and place the other lever on the spindle, again ensure the the slot is aligned with the grub screw hole.  
Do not tighten the second grub screw at this stage.



**Bolt through Fixings** - When bolting through insert the male bolts through the rose and door and secure to female bolt on the other side of the door. When tightening threads be careful not to cross them. Lastly tighten the second grub screw.

**Screw Fixings** - Where it is not possible to bolt through you must face fix the levers with the woodscrews provided. Lastly tighten the second grub screw.

Finally replace the roses and test the levers. If necessary adjust fixings to ease any binding or sticking levers.